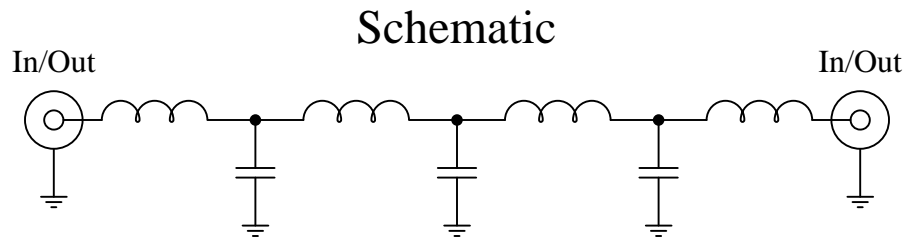


Part Number: CLPFL-2000

Low Pass Range
DC to 2000MHz

New
Low Pass Filters



Features:

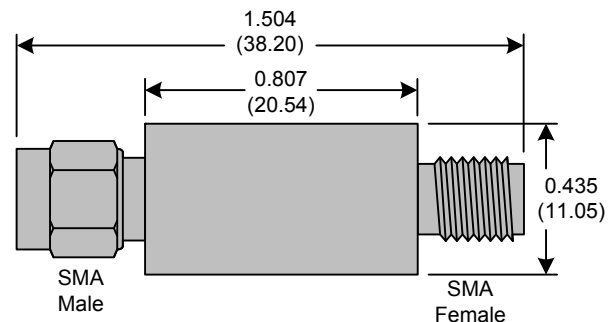
- 7th Order Butterworth Response
- 50Ω SMA Connectors

Applications:

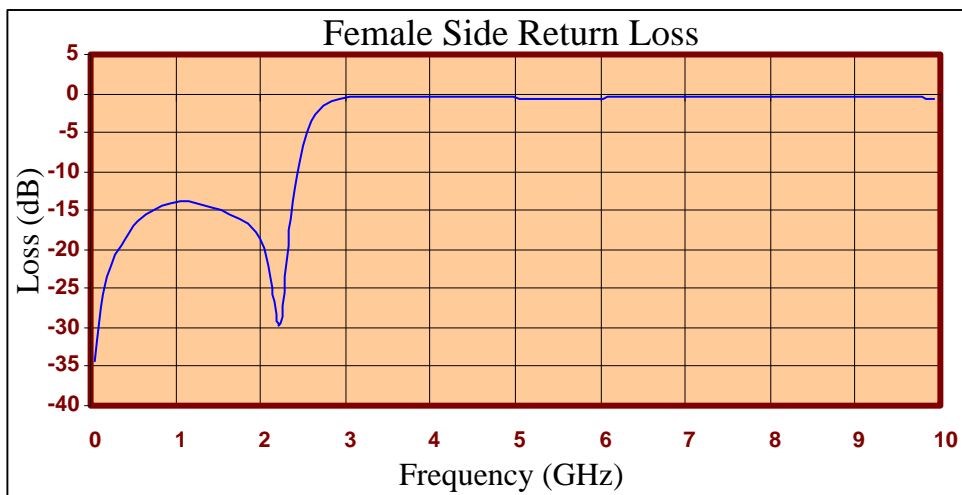
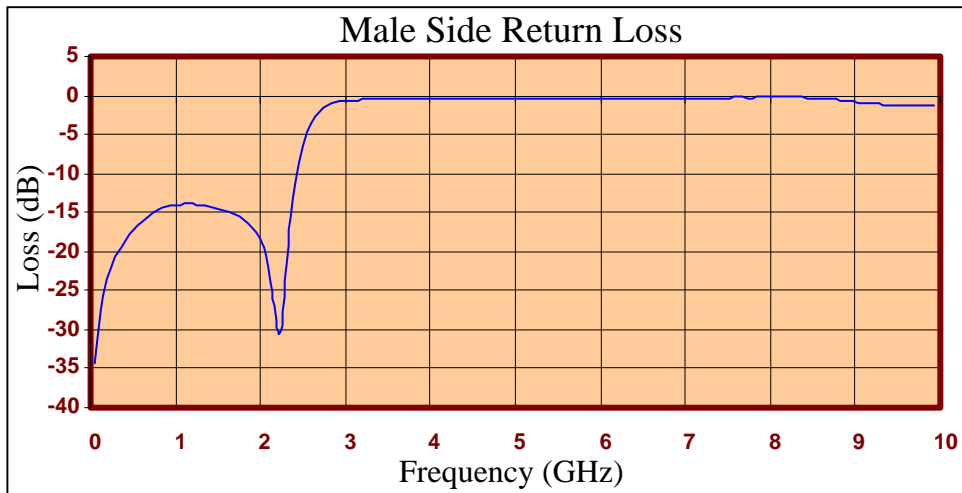
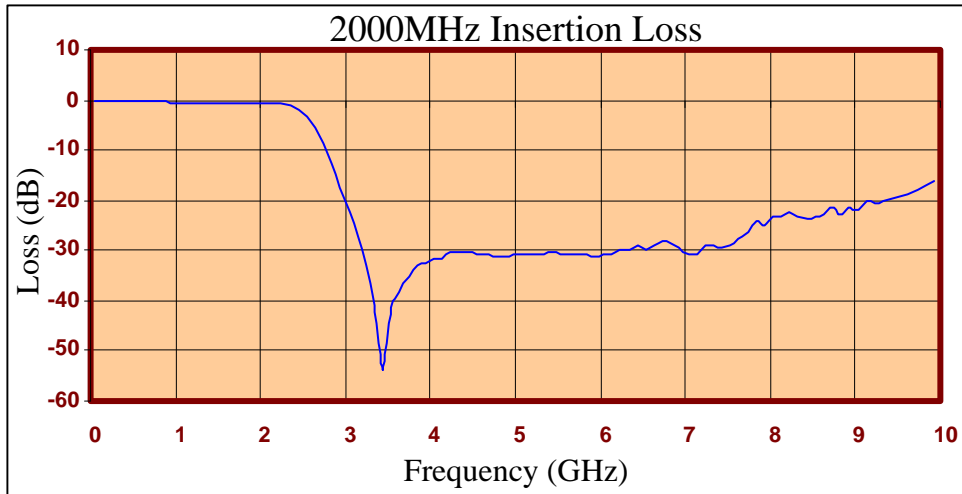
- Test Equipment
- Lab Use

Maximum Ratings:

- +36dBm (4 Watts)
- Operating Temperature: -40°C to 85°C
- Storage Temperature: -55°C to 100°C



Crystek's new line of Low Pass Filters are designed in a rugged SMA housing. This filter line has excellent out-of-band rejection. Designed for Test Equipment and General Lab Use.





FREQ (MHz)	INSERTION LOSS (dB)	Male Return Loss (dB)	Female Return Loss (dB)
50.000	-0.02	-34.28	-34.19
249.500	-0.13	-22.00	-21.92
449.000	-0.21	-17.84	-17.67
648.500	-0.29	-15.70	-15.49
848.000	-0.33	-14.48	-14.34
947.750	-0.44	-14.14	-14.03
1047.500	-0.43	-13.96	-13.88
1247.000	-0.45	-13.95	-13.99
1446.500	-0.52	-14.34	-14.53
1546.250	-0.48	-14.68	-14.92
1646.000	-0.59	-15.08	-15.39
1845.500	-0.62	-16.24	-16.65
2045.000	-0.60	-19.59	-19.84
2244.500	-0.68	-30.28	-29.55
2444.000	-1.97	-8.81	-8.81
2643.500	-5.56	-2.57	-2.62
3042.500	-22.37	-0.66	-0.50
3345.750	-41.12	-0.50	-0.44
3641.000	-38.14	-0.38	-0.51
4040.000	-31.59	-0.28	-0.51
4339.250	-30.49	-0.34	-0.48
4638.500	-30.66	-0.40	-0.48
5037.500	-30.95	-0.46	-0.57
5336.750	-30.60	-0.48	-0.63
5636.000	-30.70	-0.48	-0.63
6035.000	-30.83	-0.47	-0.56
6334.250	-29.76	-0.44	-0.49
6633.500	-29.14	-0.42	-0.41
7032.500	-30.67	-0.36	-0.35
7331.750	-28.91	-0.31	-0.33
7631.000	-27.53	-0.26	-0.34
8030.000	-23.37	-0.22	-0.37
8329.250	-23.17	-0.23	-0.38
8628.500	-22.84	-0.45	-0.40
9027.500	-22.01	-0.88	-0.41
9326.750	-19.92	-1.13	-0.46
9626.000	-18.63	-1.19	-0.52
9925.250	-16.10	-1.24	-0.63

Product Control:

Crystek Part Number:	CLPFL-2000	Release Date:	10-Jan-11
Revision Level:	A	Responsible:	K. Piotrowicz

