

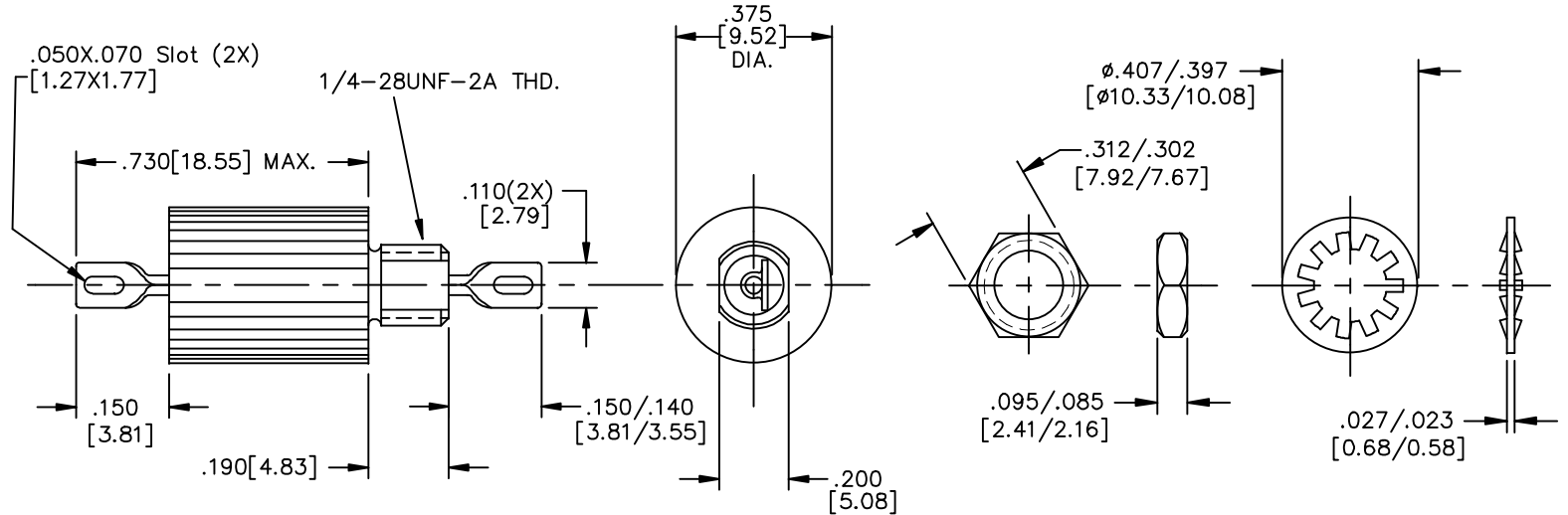
| CASE FINISH | CURRENT (AMPS) | WORKING VOLTAGE |     |                 |     | MAXIMUM DC RESISTANCE (OHMS) | MAXIMUM VOLTAGE DROP |      | MINIMUM CAPACITANCE (uF) | MIN. INSERTION LOSS PER MIL-STD-220, FULL LOAD, +25°C |        |        |        |         |         |         |         |       |        |         |       |       |
|-------------|----------------|-----------------|-----|-----------------|-----|------------------------------|----------------------|------|--------------------------|---|--------|--------|--------|---------|---------|---------|---------|-------|--------|---------|-------|-------|
|             |                | -55°C TO +85°C  |     | -55°C TO +125°C |     |                              | DC                   | AC   |                          | 14 KHz  | 30 KHz | 50 KHz | 75 KHz | 100 KHz | 150 KHz | 300 KHz | 500 KHz | 1 MHz | 10 MHz | 100 MHz | 1 GHz | 2 GHz |
|             |                | AC              | DC  | AC              | DC  |                              |                      |      |                          |   |        |        |        |         |         |         |         |       |        |         |       |       |
| SOLDER      | 1.0            | 125             | 150 | 125             | 150 | 2.5                          | 0.20                 | 0.25 | ---                      | --  | --     | --     | --     | --      | 13      | 24      | --      | 45    | 80     | --      | 70    | 70    |

**PART MARKING:**

M15733/26-0001  
 C OLSP2 DATE CODE  
 125VAC 1A 125°C  
 400HZ 125°C 150VDC  
 51-353-076

**PACKAGE MARKING:**  
 STANDARD

**MARKING NOTES:**  
 N/A



THIS PART IS CODED "NCA". SPECTRUM CONTROL, INC. DOES NOT HAVE CHANGE AUTHORITY. CUSTOMER APPROVAL REQUIRED BEFORE PRODUCT/PROCESS CHANGES CAN BE MADE.

**NOTES:**

- 1) MOUNTING TORQUE NOT TO EXCEED 7in-lbs.

| REV. NO. | CHANGE NOTICE | UNLESS OTHERWISE SPECIFIED DIMENSIONS ARE IN INCHES [MILLIMETERS] | TOLERANCES UNLESS OTHERWISE SPECIFIED | FAIRVIEW PENNSYLVANIA           |
|----------|---------------|---|---------------------------------------|---------------------------------|
| 22       | CN 59169-ENG  | DO NOT SCALE  | Fractions ±                           | Description Low Pass EMI Filter |
| 21       | CN 38679-ENG  |   | Dec. .xx±                             |                                 |
| 20       | CN 188954     |   | Dec. .xxx± .010                       |                                 |
| 19       | CN 188948     |   | Angles ±0° 30'                        |                                 |
| 18       | CN 182331     |   | CODE IDENT. NO. OLSP2                 |                                 |
|          |               | THIRD ANGLE PROJECTION  | SPECTRUM CONTROL INC.                 | Engr. J.Kraus                   |
|          |               |   | Dwn. SLAGLE                           | 51-353-076                      |
|          |               |   | Date 12-11-07                         | Sheet 1 of 1                    |

Quality Products From The Specialists In Electro-Magnetic Compatibility