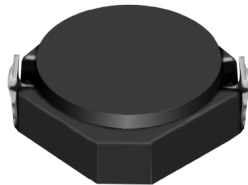


SMD Power Inductor CDRH4D15/S



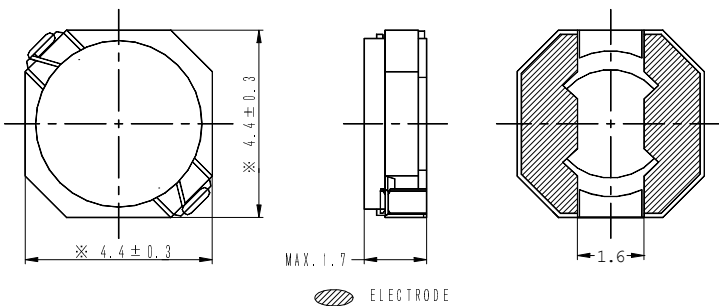
Halogen Free



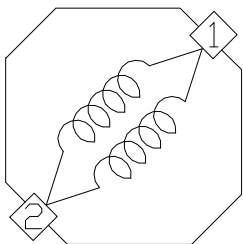
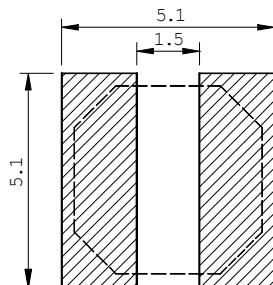
Description

- Ferrite drum core construction.
- Magnetically shielded.
- L × W × H: 4.7 × 4.7 × 1.7 mm Max.
- Product weight: 107mg (Ref.)
- Moisture Sensitivity Level: 1
- RoHS compliance.
- Halogen Free available.

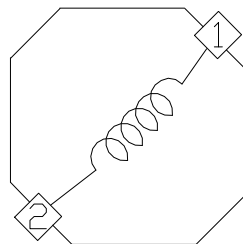
Dimension - [mm]



Land pattern and Schematics - [mm]



($1.5 \mu\text{H} \sim 5.6 \mu\text{H}$)



($6.8 \mu\text{H} \sim 33 \mu\text{H}$)

Environmental Data

- Operating temperature range: $-40^{\circ}\text{C} \sim +105^{\circ}\text{C}$ (including coil's self temperature rise)
- Storage temperature range: $-40^{\circ}\text{C} \sim +105^{\circ}\text{C}$
- Solder reflow temperature: 260°C peak.

Packaging

- Carrier tape and reel packaging
- 7.0" diameter reel
- 1000pcs per reel

Applications

- Ideally used in Mobile phone, PDA, MP3, DSC/DVC, Portable DVD, etc as DC-DC converter inductors.

SMD Power Inductor CDRH4D15/S



Electrical Characteristics

Part Name	Stamp	Inductance (μ H) [within] ※1	D.C.R. (m Ω) Max. (Typ.) (at 20°C)	Saturation Current (A) ※2		Temperature Rise Current (A) ※3
				at 25°C	at 105°C	
CDRH4D15/SNP-1R5NC	1R5	1.5 \pm 30%	41 (33)	2.30	1.90	3.40
CDRH4D15/SNP-2R2NC	2R2	2.2 \pm 30%	60 (48)	2.00	1.60	2.60
CDRH4D15/SNP-3R3NC	3R3	3.3 \pm 30%	89 (71)	1.60	1.30	1.70
CDRH4D15/SNP-4R7NC	4R7	4.7 \pm 30%	129 (103)	1.40	1.10	1.50
CDRH4D15/SNP-5R6NC	5R6	5.6 \pm 30%	141 (113)	1.20	1.00	1.40
CDRH4D15/SNP-6R8NC	6R8	6.8 \pm 30%	154 (123)	1.10	0.90	1.35
CDRH4D15/SNP-8R6NC	8R6	8.6 \pm 30%	203 (162)	1.05	0.85	1.15
CDRH4D15/SNP-100NC	100	10 \pm 30%	215 (172)	0.90	0.75	1.10
CDRH4D15/SNP-120NC	120	12 \pm 30%	279 (223)	0.85	0.65	1.00
CDRH4D15/SNP-150NC	150	15 \pm 30%	391 (313)	0.80	0.60	0.85
CDRH4D15/SNP-220NC	220	22 \pm 30%	559 (447)	0.60	0.50	0.75
CDRH4D15/SNP-270NC	270	27 \pm 30%	600 (480)	0.55	0.45	0.70
CDRH4D15/SNP-330NC	330	33 \pm 30%	777 (622)	0.50	0.40	0.60

※1. Inductance measuring condition: at 100kHz.

※2. Saturation current: The DC current at which the inductance decreases to 65% of its nominal value.

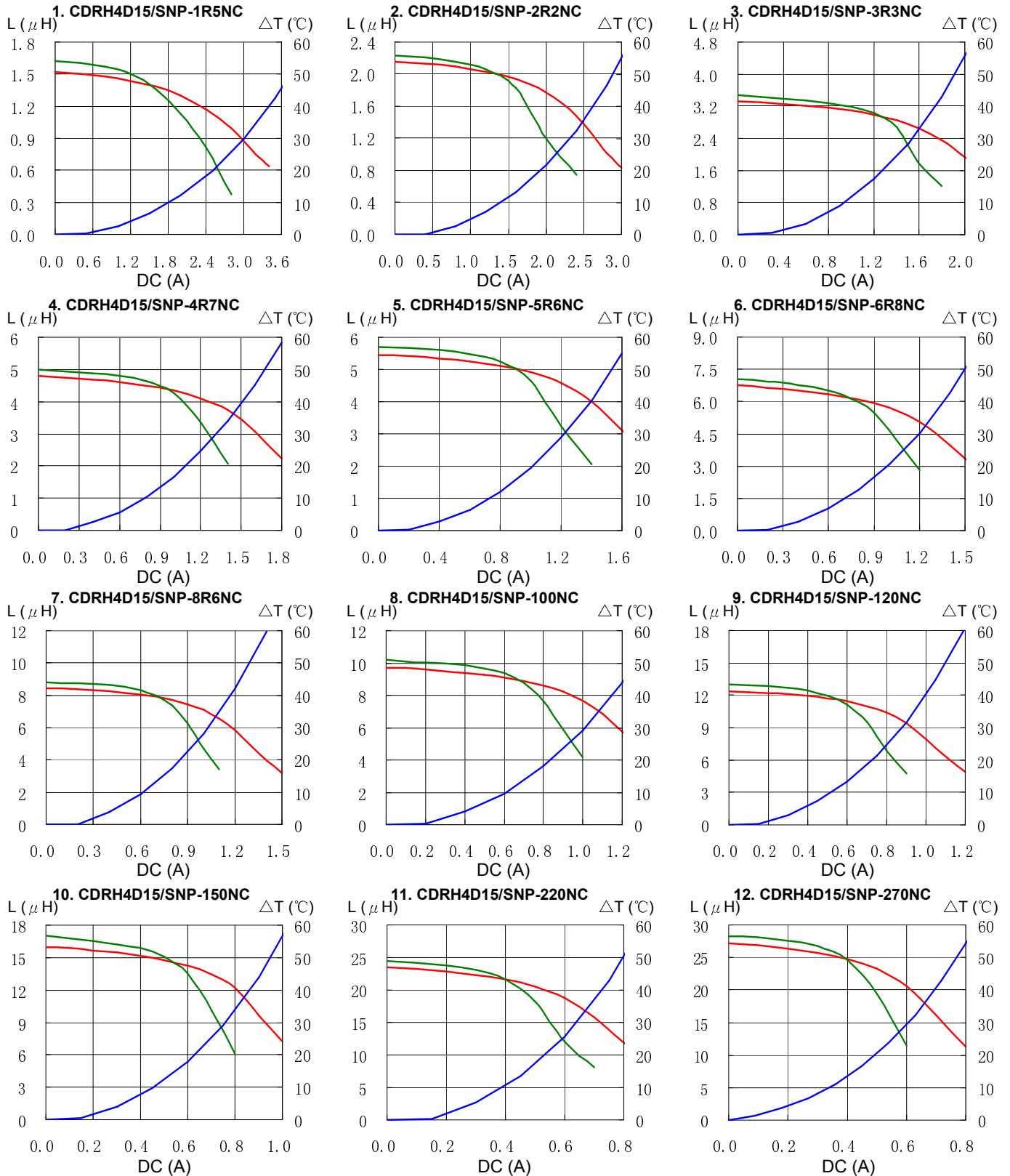
※3. Temperature rise current: The DC current at which the temperature rise is $\Delta t=40^{\circ}\text{C}$. ($T_a=20^{\circ}\text{C}$)

SMD Power Inductor CDRH4D15/S



Saturation Current & Temperature Rise Graph

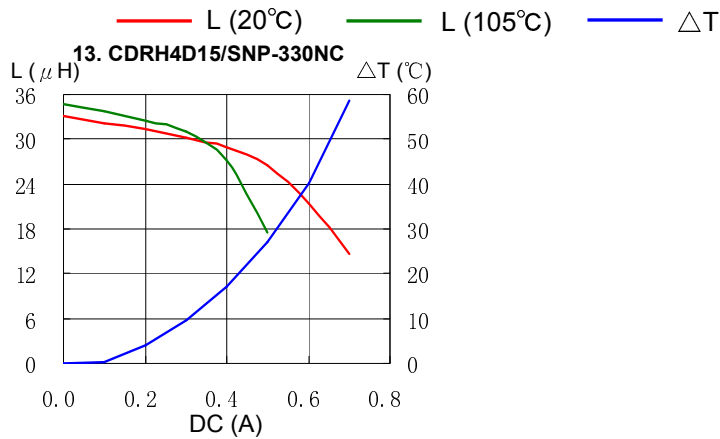
— L (20°C) — L (105°C) — ΔT



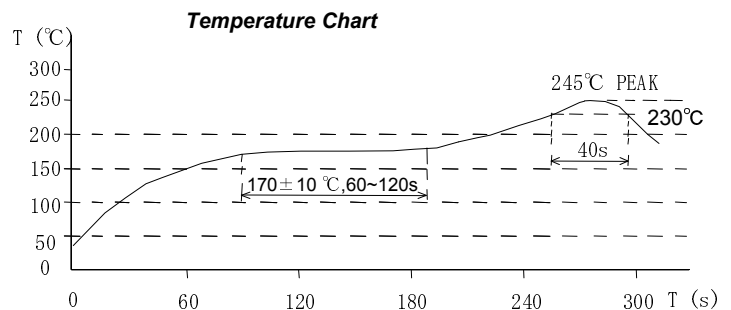
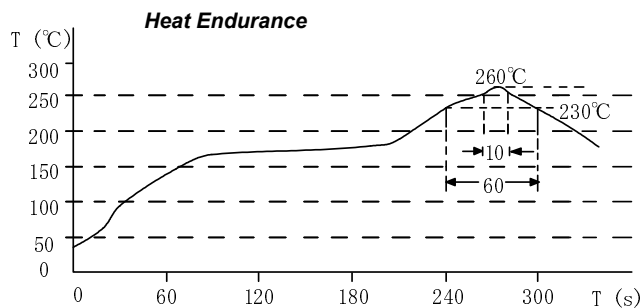
SMD Power Inductor CDRH4D15/S



Saturation Current & Temperature Rise Graph



Solder Reflow Condition



Please refer to the sales offices on our website - <http://www.sumida.com>

Hong Kong

Tel.+852-2880-6781
FAX.+852-2565-9600
sales@hk.sumida.com

Saitama(Japan)

Tel.+81-48-691-7300
FAX.+81-48-691-7340
sales@jp.sumida.com

Chicago

Tel.+1-847-545-6700
FAX. +1-847-545-6720
sales@us.sumida.com

Shanghai

Tel.+86-21-5836-3299
FAX.+86-21-5836-3266
shanghai.sales@cn.sumida.com

Seoul

Tel.+82-2-6237-0777
FAX.+82-2-6237-0778
sales@kr.sumida.com

Oberzell

Tel.+49-8591-937-0
FAX. +49-8591-937-103
contact@eu.sumida.com

Shenzhen

Tel.+86-755-8291-0228
FAX.+86-755-8291-0338
shenzhen.sales@cn.sumida.com

Singapore

Tel.+65-6296-3388
FAX.+65-6841-4426
sales@sg.sumida.com

Neumarkt

Tel.+49-9181-4509-110
FAX. +49-9181-4509-310
infocomp@eu.sumida.com

Taipei

Tel.+886-2-8751-2737
FAX.+886-2-8751-2738
sales@tw.sumida.com

San Jose

Tel.+1-408-321-9660
FAX.+1-408-321-9308
sales@us.sumida.com